

Research Support Showcase

Presented by University Libraries

Co-sponsored by Research and Sponsored Programs

April 22, 2021



Welcome

- **Kenneth Burhanna**

- Professor
- Dean, University Libraries

- **Douglas L. Delahanty**

- Professor
- Associate VP for Research



Agenda

- **Housekeeping – Ken Burhanna**
- **Data Management Planning & Data Visualization – Michael Hawkins**
- **Researcher Identity Support (ORCiD) – Yuening Zhang**
- **Statistical Consulting Software & Analysis – Kristin Yeager**
- **Innovation, Novelty & Patent Protection – Karen MacDonald**
- **Copyright & Publishing Support – Cindy Kristof**
- **Open Access Kent State (OAKS) – Mike Collura & Cindy Kristof**
- **Highlighting recently published research from Kent State – Mike Collura**
- **Q&A regarding your research support needs – Kara Robinson**

Data Management Planning

- **Michael Hawkins**

- Assistant Professor
- Data Librarian
- Head, Map Library

- **Topics for Review:**

- Review DMPs
- Data standards
- Varying levels of experience
- DMP Tool



more at University Libraries

through University Libraries

to

Find Journals
Use Journal Finder to look up publications University Libraries subscribes to

Browse Digital Collections
Browse unique materials in Special Collections & Archives

Browse Scholarly Works
Browse Open Access Kent State (OAKS) for scholarly output from Kent State or add your own scholarly work

Get Live Help
Mon-Thu: 8am - 8pm, Fri-Sun: 8am - 4pm
Ask a Librarian
Your Name (blank/anonymous)
Your Question
Start Chat

Find Books & More

- [Books, eBooks, CDs, and DVDs at Kent State \(KentLINK\)](#)
- [Books from other Ohio libraries \(OhioLINK\)](#)
- [Government Information at Kent State Libraries](#)
- [Special Collections & Archives Digital Collections](#)
 - Featured: [Kent State Shootings: May 4 Collection](#)
 - Featured: [Digital Daily Kent Stater](#)
 - [View all Special Collections finding aids](#)

Find Articles, Journals, & Databases

- [Journals](#)
 - [Browse Journals by Subject](#)
- [Databases A-to-Z](#)
 - [Browse Databases by Subject](#)
- [Search for Articles and More \(Discovery@Kent\)](#)
 - [Request an Article not available through Kent State \(Interlibrary Loan\)](#)

Citation Tools

- [Style Manuals](#)

As of June 30, 2017, University Libraries no longer subscribes to RefWorks. For information about alternative citation software tools, see the [RefWorks Transition guide](#)

Software for Research

- [Citation and Research Management Software](#)
- [Data Management Planning \(DMP Tool\)](#)
- [Software for Statistical and Qualitative Data Analysis](#)
- [Software for GIS](#)

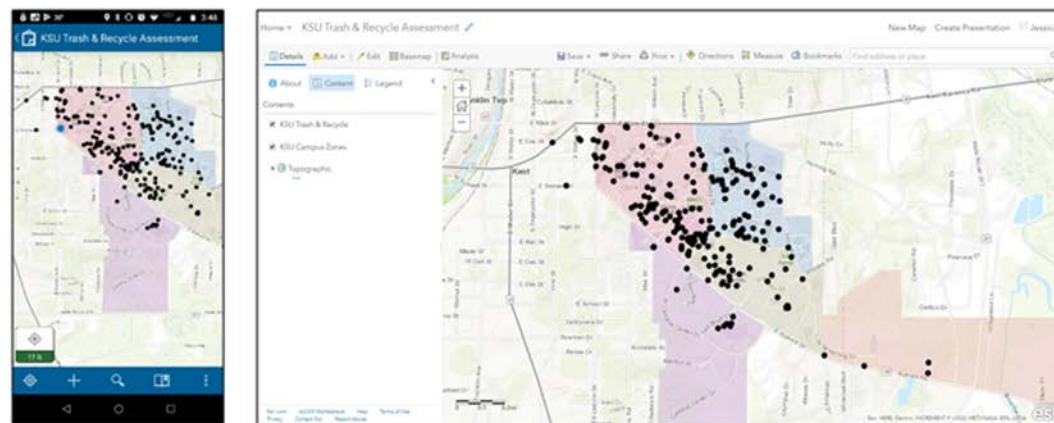
Services for Researchers

- [Copyright Services](#)
- [Data Management](#)
- [GIS Consultation](#)
- [Meet with a Librarian](#)
- [Share your research with other Kent State scholars \(Open Access Kent State\)](#)
- [Statistical Consulting](#)

Data Visualization

- Map it! - mapit@kent.edu
- Story Mapping
- Work with faculty research, the Kent community, and classes
- Expanding beyond geospatial data
- Interested in Visualizing your data - just ask!

Project: KSU Trash & Recycling Assessment



Project Summary: Created a GIS web application for use in Dr. Emariana Widner's *Conservation of Natural Resources* class. The web application facilitates student-community engagement through the collection of spatial (location) data and attribute (quality) data on trash and recycling receptacles across the Kent State University campus. The data collected was used to inventory trash and recycling receptacles and to help development better management practices across campus.

Researcher Identity Support – ORCID

- **Yuening Zhang**
 - Assistant Professor
 - STEM Librarian
 - <https://libguides.library.kent.edu/ORCID-SciENcv>

ORCID

Statistical Consulting Software Support & Analysis

- **Kristin Yeager**

- Manager, Statistical Consulting
 - Lecturer
-

- **In this presentation**

- About Statistical Consulting at University Libraries
- Software we support
- Topics we can help with
- What's ahead in 2021-2022

Statistical Consulting Software Support & Analysis

About Statistical Consulting

- **We help faculty, staff, and student researchers learn to use statistical and qualitative data analysis software through one-on-one consulting sessions, group instruction, and online tutorials**
 - For software licensing/installation: software.kent.edu
- **The service is free, and members from any discipline and any campus are welcome!**
- **Current faculty, staff, and student researchers can meet with a statistical consultant to discuss software questions, research methods, and statistical analysis**

Statistical Consulting Software Support & Analysis

Software we support

- **Statistical Software**

- SAS
- SPSS Statistics
- SPSS Amos
- JMP and JMP Pro
- Stata (\$)
- R/RStudio/Rmarkdown
- GPower

- **Qualitative Data Analysis Software**

- NVivo
- Atlas.ti (\$) *[support coming soon]*

- **Survey Software**

- Qualtrics
- REDCap *[support coming soon]*

- **Some support for related software**

- Text mining
- Web scraping
- Structural equation modeling

Software denoted (\$) is not licensed by the university; faculty/staff/students must purchase own licenses

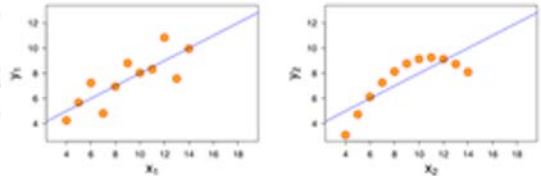
Statistical Consulting Software Support & Analysis

Topics we can help with

- How to set up & clean data
- How to approach choice of statistical analysis & how to interpret results
- How to design, set-up, distribute surveys in Qualtrics & use collected data
- How to compile qualitative data & begin coding in NVivo
- How to transfer results, tables, graphs into a manuscript or poster

```

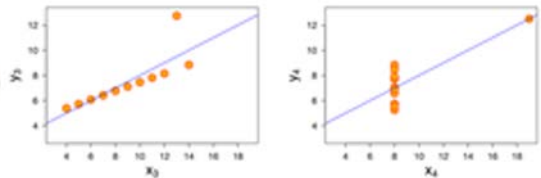
48  /// Step 2: Do a many-to-one merg
49  clear all
50  use person
51
52  merge m:1 HHX FMX using f
53  sort HHX FMX FPX
54  rename _merge _mergeFPXFM
55  save person_family.dta, r
    
```



Q4

I see myself as someone who is outgo

- Strongly agree
- Somewhat agree
- Neither agree nor disagree
- Somewhat disagree
- Strongly disagree



Name	Files	References
Attitude	0	0
Balance	6	16
Community change	18	62
Economy	20	119
Agriculture	8	20
Jobs and cost of living	16	86
Tourism	7	12
Fishing or aquaculture	19	367

Statistical Consulting Software Support & Analysis

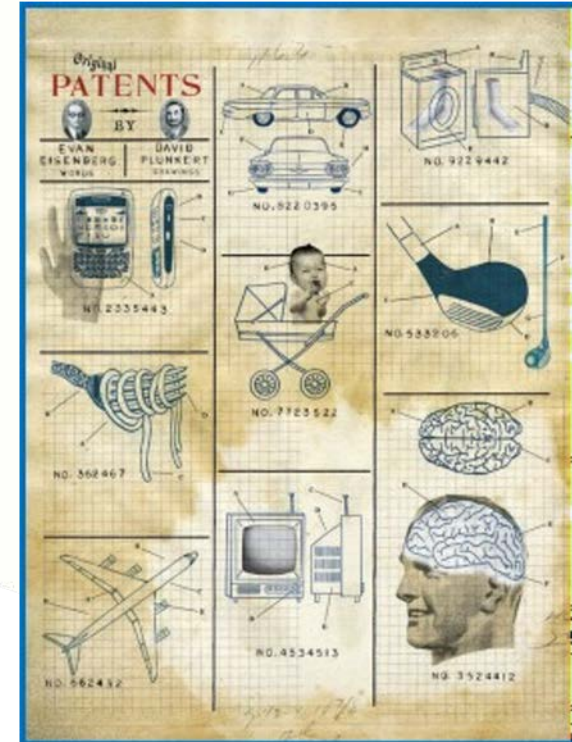
What's ahead in 2021-2022

- **We will continue virtual consulting appointments over the summer**
 - We are not sure yet about in-person consulting appointments for the Fall semester, but virtual appointments will continue to be an option even after COVID
- **Summer is a great time to request virtual instruction!**
 - We've done quite a few small-group Qualtrics workshops for different departments
 - Can focus on the topics your group needs for your project!
- **We're hiring! for a full-time graduate assistantship position AY 2021-2022**
 - Seeking a doctoral candidate with strong data analysis capabilities
 - Know someone? Have them email kyeager4@kent.edu
- **REDCap Support**
 - Kent State has its own REDCap instance (self-hosted open source online survey platform). We building our capacity to do user support
 - You should use REDCap if: you are conducting online surveys and require HIPAA-compliant data security
 - Interested users should email cphit@kent.edu to request an account

Innovation, Novelty and Patent Protection

- **Karen I. MacDonald**

- Associate Professor
- Business & Entrepreneurship Outreach Librarian
- <https://libguides.library.kent.edu/c.php?g=1139240>

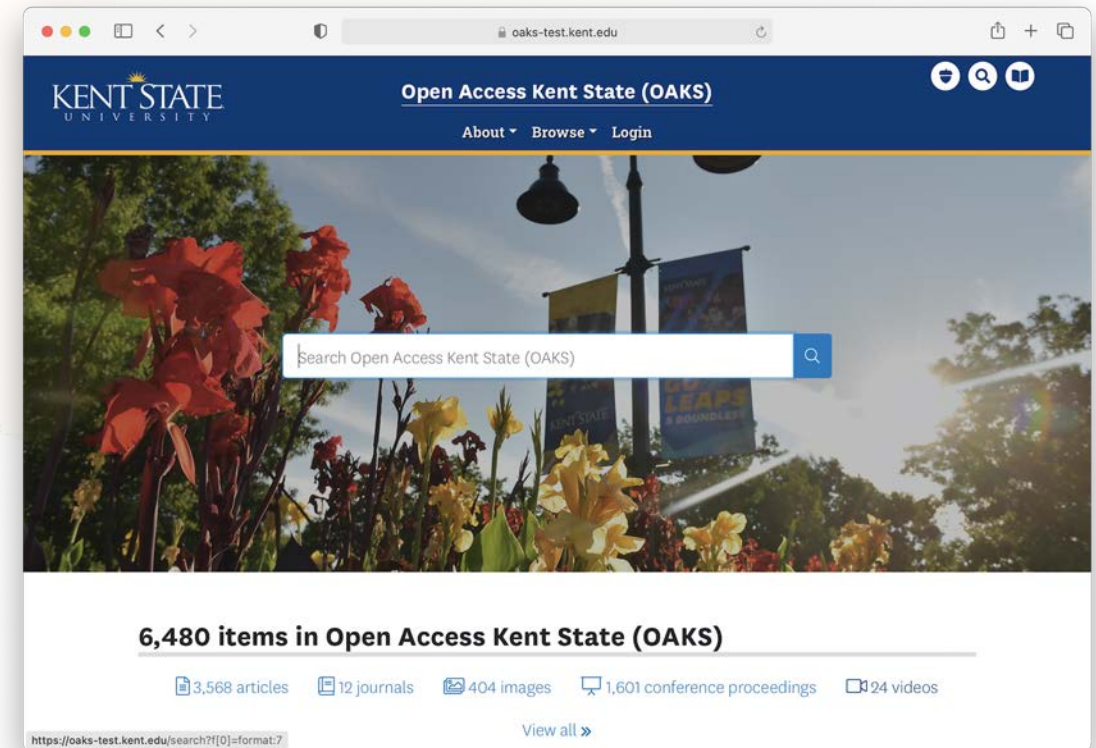


Copyright & Publishing Support

- <https://www.library.kent.edu/copyright>
- **Cindy Kristof**
 - Associate Professor
 - Head, Copyright & Scholarly Communication
- **Copyright help for articles, books, theses & dissertations**
 - Do you need to obtain permission?
 - Or can you invoke **Fair Use**?
 - Do you need to register your work with the U.S. Copyright Office?
- **Publishing**
 - What rights do you need to retain?
 - Negotiating your publishing contract
 - Course reserves
 - Pre- or Post-prints to self-archive
 - Open Access - What does Open Access mean?
 - Finding an Open Access journal
 - What about Predatory Journals?
 - What are Creative Commons licenses? What does that mean?

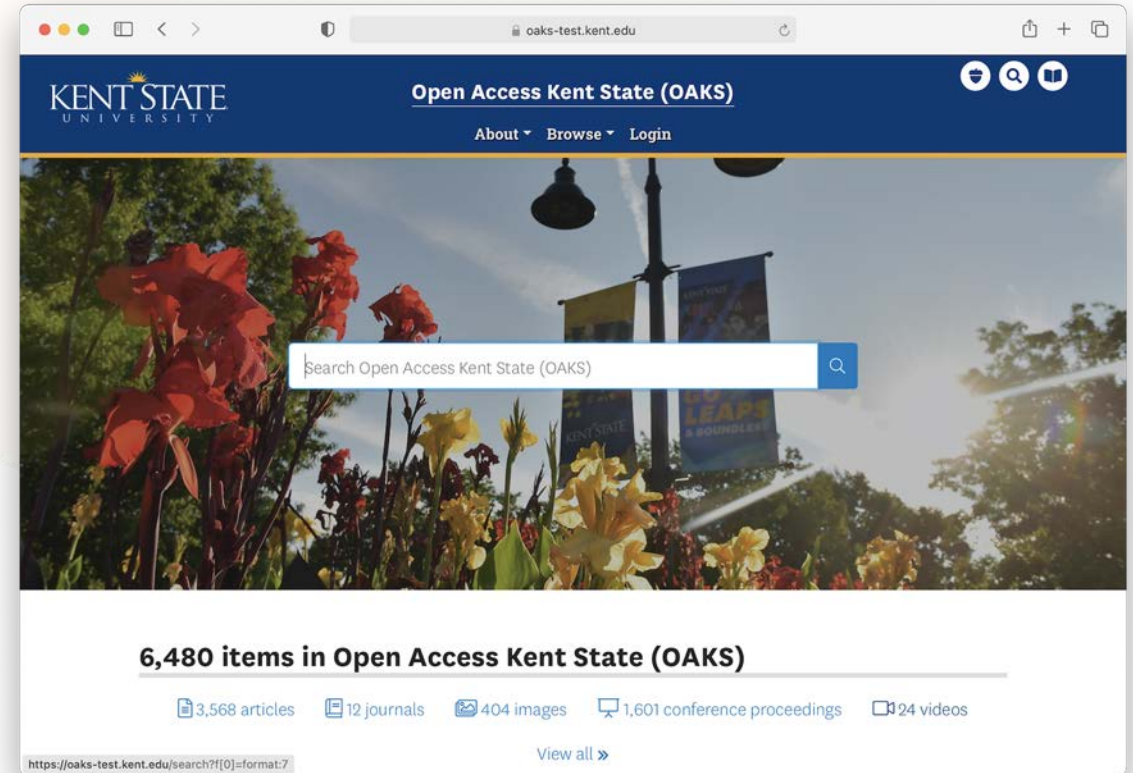
Open Access Kent State (OAKS)

- <https://oaks.kent.edu/>
- **OAKS is Kent State's Institutional Repository (IR)**
 - Preserve and promote the intellectual output of the University
 - Our Communities
 - Each College and Department, Institutes, Regional Campuses
 - Feature academic work with unique digital collections
 - Our Collections
 - COVID Research - <https://oaks.kent.edu/covid19ksu>
 - Ohio Winery Collection - <https://oaks.kent.edu/wine>
 - Sanborn Fire Insurance Maps - <https://oaks.kent.edu/sanborn>
 - Host Open Access Journals
 - The Journal of SPORT
 - <https://oaks.kent.edu/sport>



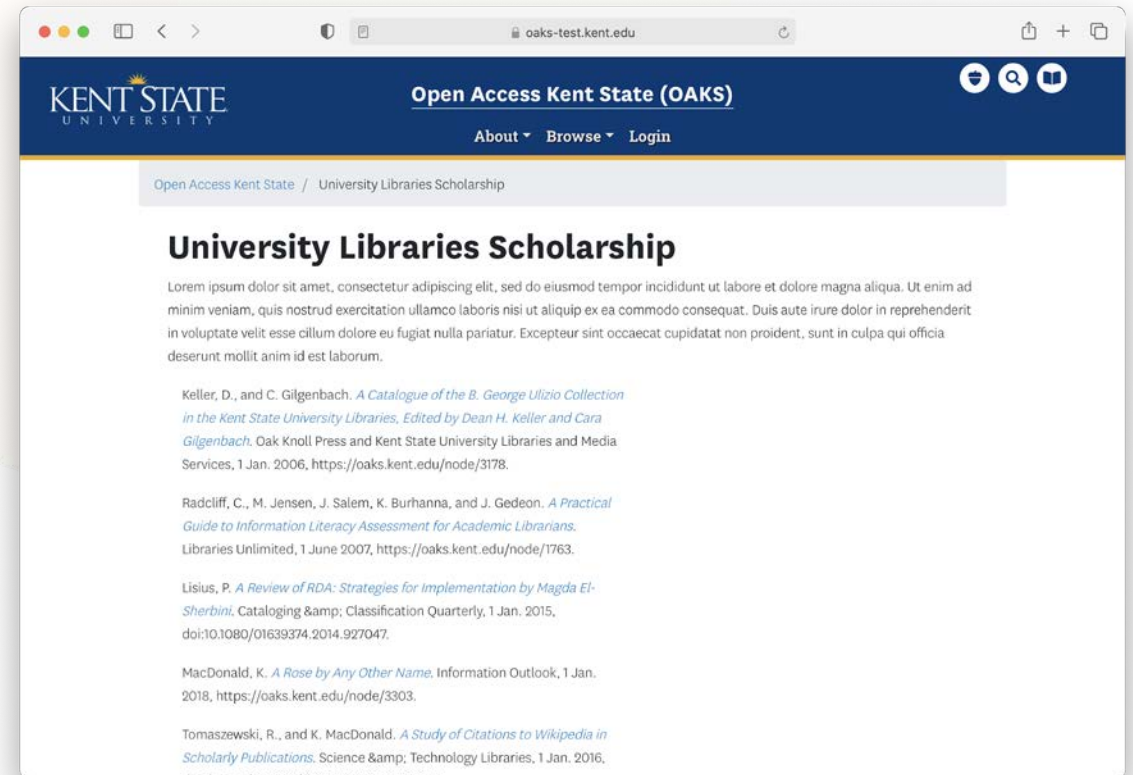
Capturing Your Research Output

- **Mike Collura**
 - Assistant Dean for Technology & Branch Libraries
- **Harvesting your publication with “auto-fetch”**
 - ORCID
 - Crossref DOIs
 - last name + affiliation search
 - "collura" + "affiliation=kent+state"
- **Citations are populated in OAKS**
 - Verified by staff before posted
 - Linked to pre-prints, post-prints or licensed content



Sharing Your Research Output

- Research Digest
- Partnering with RASP
- Curated listing of recent publication via email



Q & A – Your Research Support Needs

- What are your needs?
- How can we help?





Thank You

www.kent.edu